

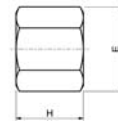
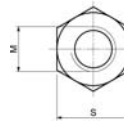


## Dado esagonale alto

Dado esagonale alto, in acciaio automatico da bonifica, altezza 1,5xd, **DIN 6330B**.



DIN 6330B



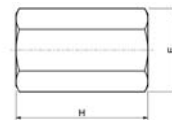
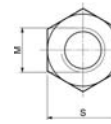
Codice	€	Pz.	M	S (mm)	E (mm)	H (mm)
C602100060	---	10	6	10	11,5	9
C602100080	---	10	8	13	14,8	12
C602100100	---	10	10	17	19,6	15
C602100120	---	10	12	19	21,5	18
C602100140	---	10	14	22	25	21
C602100160	---	10	16	24	27,5	24
C602100180	---	10	18	27	31	27
C602100200	---	10	20	30	34,6	30

Codice	€	Pz.	M	S (mm)	E (mm)	H (mm)
C602100220	---	10	22	32	36,9	33
C602100240	---	10	24	36	41,6	36
C602100270	---	1	27	41	47,3	40
C602100300	---	1	30	46	53,1	45
C602100360	---	1	36	55	63,5	54
C602100420	---	1	42	65	75	63
C602100480	---	1	48	75	86,5	72



## Dado esagonale di prolunga

Dado esagonale di prolunga, in acciaio automatico da bonifica, altezza 3xd.



Codice	€	Pz.	M	S (mm)	E (mm)	H (mm)
C602150060	---	10	6	10	11,5	18
C602150080	---	10	8	13	14,8	24
C602150100	---	10	10	17	19,6	30
C602150120	---	10	12	19	21,5	36
C602150140	---	10	14	22	25	42
C602150160	---	10	16	24	27,5	48
C602150180	---	1	18	27	31	54
C602150200	---	1	20	30	34,6	60

Codice	€	Pz.	M	S (mm)	E (mm)	H (mm)
C602150220	---	1	22	32	36,9	66
C602150240	---	1	24	36	41,6	72
C602150270	---	1	27	41	47,3	81
C602150300	---	1	30	46	53,1	90
C602150360	---	1	36	55	63,5	108
C602150420	---	1	42	65	75	126
C602150480	---	1	48	75	86,5	144

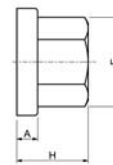
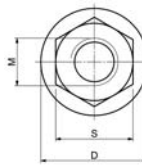


## Dado esagonale con rondella

Dado esagonale con rondella, in acciaio automatico da bonifica, **DIN 6331**.



DIN 6331



Codice	€	Pz.	M	S (mm)	E (mm)	H (mm)	A (mm)	D (mm)
C602200080	---	10	8	13	14,8	12	3,5	18
C602200100	---	10	10	17	19,6	15	4	22
C602200120	---	10	12	19	21,5	18	4	25
C602200140	---	10	14	22	25	21	4,5	28
C602200160	---	10	16	24	27,5	24	5	31
C602200180	---	10	18	27	31	27	5	34
C602200200	---	10	20	30	34,6	30	6	37

Codice	€	Pz.	M	S (mm)	E (mm)	H (mm)	A (mm)	D (mm)
C602200220	---	10	22	32	36,9	33	6	40
C602200240	---	1	24	36	41,6	36	6	45
C602200270	---	1	27	41	47,3	40	8	51
C602200300	---	1	30	46	53,1	45	8	58
C602200360	---	1	36	55	63,5	54	10	68
C602200420	---	1	42	65	75	63	12	80
C602200480	---	1	48	75	86,5	72	14	92

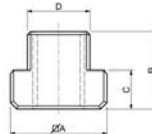
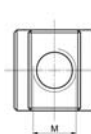


## Tassello per cava a T

Tassello per cava a T, in acciaio da bonifica, **DIN 508 UNI 5531**.



DIN 508



Codice	€	Pz.	M	D (mm)	A (mm)	B (mm)	C (mm)	Cava (mm)
C602250005	---	10	6	7,7	13x13	10	6	8
C602250010	---	10	8	9,7	15x15	12	6	10
C602250015	---	10	8	11,7	18x18	14	7	12
C602250020	---	10	10	11,7	18x18	14	7	12
C602250025	---	10	8	13,7	22x22	16	8	14
C602250030	---	10	10	13,7	22x22	16	8	14
C602250035	---	10	12	13,7	22x22	16	8	14
C602250040	---	10	8	15,7	25x25	18	9	16
C602250045	---	10	10	15,7	25x25	18	9	16
C602250050	---	10	12	15,7	25x25	18	9	16

Codice	€	Pz.	M	D (mm)	A (mm)	B (mm)	C (mm)	Cava (mm)
C602250055	---	10	14	15,7	25x25	18	9	16
C602250060	---	10	8	17,7	28x28	20	10	18
C602250065	---	10	10	17,7	28x28	20	10	18
C602250070	---	10	12	17,7	28x28	20	10	18
C602250075	---	10	14	17,7	28x28	20	10	18
C602250080	---	10	16	17,7	28x28	20	10	18
C602250085	---	10	16	19,7	32x32	24	12	20
C602250090	---	10	18	19,7	32x32	24	12	20
C602250095	---	10	16	21,7	35x35	28	14	22
C602250100	---	10	18	21,7	35x35	28	14	22



← Pagina precedente

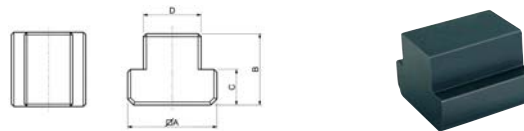
Codice	€	Pz.	M	D (mm)	A (mm)	B (mm)	C (mm)	Cava (mm)
C602250105	---	10	20	21,7	35x35	28	14	22
C602250110	---	1	16	23,7	40x40	32	16	24
C602250115	---	1	20	23,7	40x40	32	16	24
C602250120	---	1	22	23,7	40x40	32	16	24
C602250125	---	1	16	27,7	44x44	36	18	28
C602250130	---	1	20	27,7	44x44	36	18	28

Codice	€	Pz.	M	D (mm)	A (mm)	B (mm)	C (mm)	Cava (mm)
C602250135	---	1	22	27,7	44x44	36	18	28
C602250140	---	1	24	27,7	44x44	36	18	28
C602250145	---	1	24	29,7	48x48	38	19	30
C602250150	---	1	27	31,6	50x50	40	20	32
C602250155	---	1	30	35,6	54x54	44	22	36
C602250160	---	1	36	41,6	65x65	52	26	42



### Tassello per cava a T senza foro

Tassello per cava a T senza foro, in acciaio da bonifica, classe 8.8, Nr. 508R.



Codice	€	D (mm)	A (mm)	B (mm)	C (mm)	Cava (mm)
C602270005	---	7,7	13x13	10	6	8
C602270010	---	9,7	15x15	12	6	10
C602270015	---	11,7	18x18	14	7	12
C602270020	---	13,7	22x22	16	8	14
C602270025	---	15,7	25x25	18	9	16
C602270030	---	17,7	28x28	20	10	18
C602270035	---	19,7	32x32	24	12	20

Codice	€	D (mm)	A (mm)	B (mm)	C (mm)	Cava (mm)
C602270040	---	21,7	35x35	28	14	22
C602270045	---	23,7	40x40	32	16	24
C602270050	---	27,7	44x44	36	18	28
C602270055	---	31,6	50x50	40	20	32
C602270060	---	35,6	54x54	44	22	36
C602270065	---	41,6	65x65	52	26	42



### Tassello per cava a T doppia lunghezza

Tassello per cava a T doppia lunghezza, in acciaio da bonifica, Nr 508L.



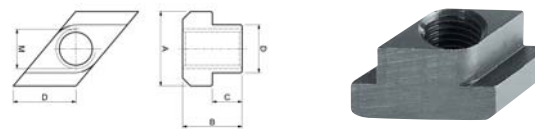
Codice	€	Pz.	M	D (mm)	L (mm)	A (mm)	B (mm)	C (mm)	Cava (mm)
C602280005	---	10	6	7,7	26	13	10	6	8
C602280010	---	10	8	9,7	30	15	12	6	10
C602280015	---	10	10	11,7	36	18	14	7	12
C602280020	---	10	12	13,7	44	22	16	8	14
C602280025	---	10	14	15,7	50	25	18	9	16
C602280030	---	10	16	17,7	56	28	20	10	18

Codice	€	Pz.	M	D (mm)	L (mm)	A (mm)	B (mm)	C (mm)	Cava (mm)
C602280035	---	1	18	19,7	64	32	24	12	20
C602280040	---	1	20	21,7	70	35	28	14	22
C602280045	---	1	22	23,7	80	40	32	16	24
C602280050	---	1	24	27,7	88	44	36	18	28
C602280055	---	1	27	31,6	100	50	40	20	32
C602280060	---	1	30	35,6	108	54	44	22	36



### Tassello romboidale per cava T

Tassello romboidale per cava T, in acciaio da bonifica, Nr 510.



Codice	€	M	D (mm)	A (mm)	B (mm)	C (mm)	Cava (mm)
C602300005	---	10	11,7	18	14	7	12
C602300010	---	10	13,7	22	16	8	14
C602300015	---	10	17,7	28	20	10	18
C602300020	---	12	13,7	22	16	8	14
C602300025	---	14	15,7	25	18	9	16
C602300030	---	16	17,7	28	20	10	18
C602300035	---	16	19,7	32	24	12	20

Codice	€	M	D (mm)	A (mm)	B (mm)	C (mm)	Cava (mm)
C602300040	---	16	21,7	35	28	14	22
C602300045	---	16	27,7	44	36	18	28
C602300050	---	18	19,7	32	24	12	20
C602300055	---	20	21,7	35	28	14	22
C602300060	---	24	27,7	44	36	18	28
C602300065	---	30	35,6	54	44	22	36



### Rondelle normali tornite

Rondelle normali tornite, in acciaio automatico da bonifica.



Codice	€	Pz.	Per filetto	D (mm)	E (mm)	H (mm)
C602350060	---	10	M6	6,6	13	3,5
C602350080	---	10	M8	8,4	18	4
C602350100	---	10	M10	10,5	22	4
C602350120	---	10	M12	13	28	5
C602350140	---	10	M14	15	35	6
C602350160	---	10	M16	17	35	6
C602350180	---	10	M18	19	40	6
C602350200	---	10	M20	21	40	6

Codice	€	Pz.	Per filetto	D (mm)	E (mm)	H (mm)
C602350220	---	10	M22	23	45	8
C602350240	---	10	M24	25	45	8
C602350270	---	1	M27	28	60	10
C602350300	---	1	M30	31	60	10
C602350360	---	1	M36	37	70	12
C602350420	---	1	M42	43	80	12
C602350480	---	1	M48	49	90	12