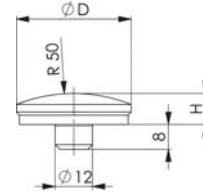


**format** professional quality **Puntale d'appoggio bombato**

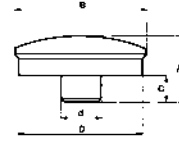
Puntale d'appoggio bombato con perno, in acciaio da bonifica brunito.



Codice	€	Ø D (mm)
C609320010	---	39

**SD** **Puntale d'appoggio bombato**

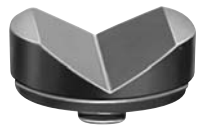
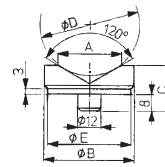
Puntali d'appoggio bombati, in acciaio da bonifica brunito, utilizzabili su cod. C60010, C60018, C60030 e C60035, Nr. 6440.



Codice	€	A (mm)	B (mm)	C (mm)	D (mm)	d (mm)
C600200018	---	18	37	8	35	12

**format** professional quality **Puntale d'appoggio prismatico**

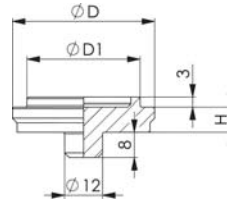
Puntale d'appoggio prismatico, con perno, in acciaio da bonifica brunito.



Codice	€	Grandezza (mm)	A (mm)	Ø B (mm)	C (mm)	Ø D (mm)	Ø E (mm)
C609320030	---	45	32	45	23	10-50	42

**format** professional quality **Piastra di centraggio**

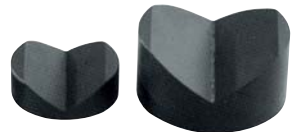
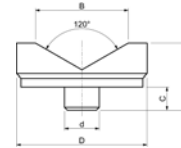
Piastra di centraggio con perno, in acciaio temprato.



Codice	€	H (mm)	Ø D (mm)	Ø D1 (mm)
C609320090	---	8	45	35,8

**SD** **Puntale d'appoggio prismatico**

Puntali d'appoggio prismatici, in acciaio da bonifica brunito, utilizzabili su cod. C60010, C60018, C60030 e C60035, Nr. 6441.

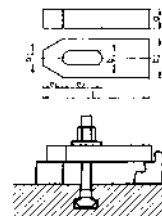


Codice	€	A (mm)	B (mm)	C (mm)	D (mm)	d (mm)
C600250023	---	23	32	8	45	12
C600250038	---	38	56	8	65	12

**format** professional quality **Staffa semplice**

Staffa semplice, in acciaio da bonifica verniciata, DIN 6314.

DIN 6314



Codice	€	a (mm)	b2 (mm)	l (mm)	b1 (mm)	e2 (mm)	e1 (mm)	b3 (mm)	Per vite (M)
C609180007	---	10	20	50	6,6	20	10	8	6
C609180009	---	12	25	60	9	22	13	10	8
C609180011	---	15	30	80	11	30	15	12	10
C609180014	---	19	38	100	14	40	21	14	12/ 14
C609180016	---	19	38	125	14	50	21	14	12/ 14
C609180018	---	24	48	125	18	45	26	18	16/ 18
C609180020	---	24	48	160	18	65	26	18	16/ 18
C609180022	---	30	60	160	22	60	30	22	20/ 22
C609180024	---	30	60	200	22	80	30	22	20/ 22